

# Critical Care Corner

JUNE 2024

Society of Critical Care Medicine  
Texas Chapter





# CONTENTS:

## **1 President's Corner**

Laura Blackburn, PharmD, BCPS, BCCCP, FCCM

## **2 Symposium**

Laura Blackburn, PharmD, BCPS, BCCCP, FCCM

## **3 Communications**

Melissa Sandler, PharmD, BCCCP

## **4 Research**

Emily Highsmith, PharmD, BCCCP

## **5 Nominations**

Kyllie Ryan-Hummel, PharmD, BCCCP

## **6 Programs**

Jeanneé Campbell, PA-C

## **7 Membership**

Vy Pham, PharmD, BCPS

## **8 Awards**

Chelsea N. Lopez, PharmD, BCCCP

## **9 Community Engagement**

Annette Lista, PharmD, BCCCP



**Editor:** Jonathan Patterson, PharmD, BCCCP

# President's Corner

Hello SCCM Texas Chapter!

I hope everyone is recovering from the wild storms this spring. Please prepare for the forecasted active hurricane season. Resources may be found on the NOAA website <https://www.noaa.gov/hurricane-prep>

Hoping for the best, prepared for the worst, and unsurprised by anything in between ~ Maya Angelou



**Laura Blackburn, PharmD,  
BCPS, BCCCP, FCCM**

The 13th annual symposium, Navigating the Frontiers of Critical Care: Innovations and Challenges, is taking shape, and it will be held in the heart of the Texas Medical Center at the Houston Methodist Research Institute. It is an honor to welcome back Dr Lauren Sorce, current SCCM president, to deliver the opening keynote address. We are eager to support our membership with education, networking, presentation opportunities, and cool prizes! I am looking forward to seeing everyone live and in person especially at our Friday night social, hearing the informative sessions, and participating in the Saturday morning game to kick off day 2. Registration opens July 1st, and be sure to get the early bird price. I hope to see you there!

I am interested in what our members have been working on in the last year! The Research Committee is organizing to review your research abstract submissions for presentation at the annual symposium and select winners for the JJ Bruno Symposium Award. Presenters of accepted abstracts will enjoy complimentary symposium registration. We are happy to support your research endeavors with financial support through the JJ Bruno Symposium Award in addition to the Joseph L Nates research grant and Alan I Fields Award (application cycles will open at symposium)!

SCCM encourages excellence in teaching and research with recognition of distinguished members each year at Congress through their annual awards program. We are proud to have highly qualified Texas Chapter members, and our Nominations Committee will be submitting four distinguished candidates for these prestigious national awards. Check out the Nominations Committee for details!

Continuing on with recognition, kudos to our new social media coordinator, Courtney Hall, whose posts you may have seen on our Facebook and Instagram pages. She has been collaborating with our Membership Committee to recognize our new members #MemberMondays and advertise the new Taco Giveaway!

Thank you to Melissa Sandler, outgoing newsletter editor, and Celia Morton, outgoing Membership Chair, for your time and dedication. Melissa has been promoted to Communications Chair and is passing the editorial reigns over to Jonathan Patterson. Our new Membership Chair is Vy Pham. We are excited to work with you both!

We welcome your feedback and ideas for how the chapter can best serve you, so feel free to reach out or catch any of the team at a meeting!

Best regards,  
Laura M. Blackburn, PharmD, BCPS, BCCCP, FCCM

*Our website got a makeover due to the old theme no longer being supported.  
Check it out!  
Visit our website [www.sccmtexaschapter.org](http://www.sccmtexaschapter.org) and follow us on Facebook,  
Instagram, and X @sccmtxchapter for more information and updates on chapter  
activities*

*Looking to get involved? We are always looking for new volunteers! Check out  
the committee pages and reach out to the chairs to learn more about how!*



# Symposium Committee



**Symposium Chair:** Laura M. Blackburn, PharmD, BCPS, BCCCP, FCCM

**Event:** Society of Critical Care Medicine Texas Chapter's 13th Annual Symposium

**Date:** September 27th and 28th, 2024

**City:** Houston, Texas

**Venue:** Houston Methodist Research Institute in the Texas Medical Center

**Theme:** Navigating the Frontiers of Critical Care: Innovations and Challenges

**Keynote speaker:** Lauren Sorce, PhD, RN, CPNP-AC/PC, FAAN, FCCM

Society of Critical Care Medicine 2024 President

Laura Blackburn, PharmD,  
BCPS, BCCCP, FCCM



We are excited to welcome the 13th annual symposium attendees to the Houston Methodist Research Institute located in the Texas Medical Center. We are planning a fantastic lineup of speakers, educational sessions, research abstract presentations, vendors, a fun interactive game, and highly coveted prizes.

Registration portal opens on **Monday, July 1** with early bird pricing through **Thursday, September 12**.

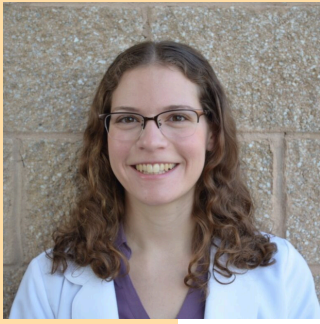
Research abstract submission portal opens on **Monday, July 1** and ends **Friday, August 2**.

Check out the Research Committee section for more on abstract submission criteria and prizes for the **JJ Bruno Symposium Research Award**.

Visit the website for further information: <https://www.sccmtexaschapter.org/annual-symposium/>

If you have any questions, reach out to Laura Blackburn at [lblackburn@houstonmethodist.org](mailto:lblackburn@houstonmethodist.org)





Melissa Sandler,  
PharmD, BCCCP



# Communications Committee

The Communications Committee is responsible for the dissemination of information between our chapter and its members.

Please visit our website, [www.sccmtexaschapter.org](http://www.sccmtexaschapter.org), and follow us on Facebook, Instagram, and X @sccmtxchapter for more information and chapter activities, including **#MemberMonday** where we feature one of our fantastic members each week!

**PS:** We're in progress of updating our website! We look forward to improving its appearance and functionality. Can't wait for you to see what we have in store.



# Research Committee



Emily Highsmith,  
PharmD, BCCCP

The Research Committee is excited to announce that we will soon be accepting abstract submissions for research snapshots during our Annual Symposium! This is a great opportunity for our membership to showcase their work and an opportunity to gain experience giving platform presentations. Members can submit abstracts for case reports or research that is either completed or in-progress. Accepted abstracts will be invited for a 5-minute podium presentation at our Annual Symposium, taking place this September 27th – 28th in Houston. Furthermore, the highest quality abstracts will be eligible to win the **Jeffrey J. Bruno Symposium Award**, which allows for free symposium registration as well as a monetary award. **The 1st place winner will receive \$600 and the 2nd place abstract will receive \$400** – these funds can be utilized towards SCCM or SCCM Texas Chapter activities over the next 2 years. The submission portal will be open from **July 1st – August 2nd**. For more information, please visit our website at: <https://www.sccmtexaschapter.org/abstracts/>

We would also like to highly encourage all members to start considering research they would like to perform and plan to submit for the chapter's **Joseph L. Nates Grant of \$4000**. This is an annual research grant which is intended to support clinical research designed to enhance the care and outcomes of critically ill patients. The application portal will be opening later this summer with a deadline in late December. We are in the process of updating our website, but please check back later this summer for full details!

Additionally, later this fall we will be accepting applications for our **Alan I. Field's award**. This award is for SCCM members who have had their abstracts accepted to SCCM Congress 2025 and has a monetary award of **\$1500 for first place and \$1000 for second place**. We are also in the process of updating this section of our website to reflect the correct deadlines, but check back later this summer!

Lastly, in an ongoing effort to increase the outreach of the research committee in the coming year we would love for you to join our committee! We are in particular need of nurses, nurse practitioners, respiratory therapists, dietitians, physical or occupational therapists, physician's assistants and other allied health professionals. Please review the information on the SCCM-Texas Chapter website Research tab or contact **research@sccmtexaschapter.org** for more information on joining the research committee.

# Nominations Committee

We are excited to continue growing our **FCCM mentorship program** and are looking forward to the programs' expansion. If you are interested in applying for fellowship to the American College of Critical Care Medicine (ACCM) in 2025, please check out our website and reach out for more information.

We are always looking for volunteers to serve as mentors for our FCCM mentorship program and would love to hear from you. Be on the lookout for new quarterly development sessions to begin later this year; reach out if you would like to get involved!



If you have any questions about the nominations process, FCCM mentorship program, or would like to get involved with the committee please email us at **[nominations@sccmtexaschapter.org](mailto:nominations@sccmtexaschapter.org)**.

Kyllie Ryan-Hummel,  
PharmD, BCCCP



**SCCM encourages excellence in teaching and research with recognition of distinguished members each year at Congress through their annual awards program. We are proud to submit the following candidates for these prestigious national awards:**

- **Shubin-Weil Master Clinician/Teacher: Excellence in Bedside Teaching Award** nominees are role models of excellence in teaching and ethical practice of critical care. They have direct patient responsibilities, and submit recommendations from at least two trainees testifying to their outstanding clinician/teacher impact.
  - **Nominee:** Kirstin Henley, MD, MS
- **Drs. Vidyasagar and Nagamani Dharmapuri Award for Excellence in Pediatric Critical Care Medicine** nominees have achieved national and international professional prominence by virtue of personal character, leadership, eminence in clinical practice, and outstanding contributions to research, education, program development, and advocacy for pediatric critical care medicine. With a dedication to leadership in pediatric critical care medicine, as evidenced by current and past academic and organizational accomplishments that have furthered the mission, vision, and values of SCCM, specifically pertaining to the care of critically ill and injured infants and children through scientific publications, research grants and projects and teaching accomplishments.
  - **Nominee:** Mohammed Salameh, DO
- The **Norma J. Shoemaker Award for Critical Care Nursing Excellence** award supports those who have achieved excellence in critical care, clinical practice, education, and/or administration and demonstrated a commitment to SCCM through involvement in SCCM committees or activities at the local, chapter, or national level.
  - **Nominee:** Daniel Arellano, PhD, RN, APRN, ACNP-BC, FNP-BC, CCRN, CEN, CFRN, EMT-P, FCCM, FAANP
- A **Safar Global Partner Award** nominee has distinguished themselves by material contributions to SCCM's achievement of its international priorities. And can demonstrate objectively that the contributions have a direct link to the measurable achievement of SCCM's international priorities.
  - **Nominee:** Chris Perme, PT, CCS, FCCM

# Programs Committee



Here are the most recent and upcoming programs by region including date, topic, sponsor, and location.

Please join us for networking and education!

## SCCM Texas Chapter Programming

### DFW:

<b>May 21</b>	DanGer Shock Randomized Control Trial	Abiomed	Eddie V's
---------------	---------------------------------------	---------	-----------

### Houston:

<b>June 12</b>	Recognizing and Resolving Potentially Life-threatening Digoxin Toxicity	SERB	Grace's on Kirby
----------------	---	------	------------------

<b>June 26</b>	Highlight HLH: There is no time to wait	Sobi	Brennan's
----------------	---	------	-----------

<b>July 10</b>	Clinical Decision Support Tools for Patient Monitoring and Alarm Management	Philips	Brennan's
----------------	---	---------	-----------

<b>July 31</b>	NxStage	Fresenius Medical Care	Maggiano's
----------------	---------	------------------------	------------

<b>August 7</b>	TBD	Mallinckrodt Pharmaceutical	TBD
-----------------	-----	-----------------------------	-----

### San Antonio:

<b>April 24</b>	Clinical Best Practices: Surgical Use of Intact Fish Skin Graft for Advanced Wound Care	Kerecis	J Prime Steakhouse
-----------------	---	---------	--------------------

**Be on the lookout for a social this summer and more educational programming to be resumed in July!**

### Midland:

**Be on the lookout for an educational program this summer!**



## Want to get involved?

**We need a Programs Coordinator for the Austin area!**

Please contact us at [programs@sccmtexaschapter.org](mailto:programs@sccmtexaschapter.org).

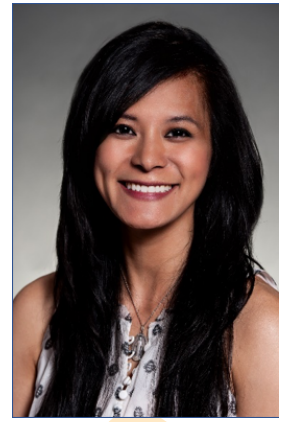
The average time commitment is approximately 4-6 hours per month.

Duties include:

- Organize regularly occurring Austin area chapter meetings
- Plan networking opportunities in the Austin area for members
- Inform prospective members of benefits and opportunities of membership

Jeanneé Campbell, PA-C

# Membership Committee



Vy Pham,  
PharmD, BCPS

Chapter membership is currently at **605 members** total. With all the exciting programming events this upcoming year, **now is a great time** to ensure your **membership is current** and to **recruit** your colleagues to join SCCM and the Texas Chapter!

Also, please be on the lookout in your email for entry into the upcoming Chipotle Catering Giveaway this June!

We have multiple **opportunities for involvement** within our chapter and are actively seeking volunteers for members interested in getting involved in our various chapter committees. Information on our committees can be found on our website under Texas Chapter Committees.

If you would like to get involved, contact us with questions or areas that are you interested in participating at **membership@sccmtexaschapter.org**.

You can also contact us if you have any questions regarding membership, your renewal date, or if you're not receiving emails from us (and would like to).







**Chelsea N. Lopez,  
PharmD, BCCCP**

# Awards Committee

The mission of the awards committee is to acknowledge SCCM Texas Chapter members for their accomplishments and contributions to the care of critically ill patients throughout the previous year.

## 2024-2025 Awards

This year's professional development and chapter awards will open for nominations at the end of our annual symposium in September! More details, including deadlines, will be shared in the fall. Looking forward to hearing about all the amazing things our chapter members are doing for our patients and profession.

If you are looking to become more involved with the SCCM Texas Chapter, I encourage you to consider the awards committee. If interested, please reach out to me at [clopez6@houstonmethodist.org](mailto:clopez6@houstonmethodist.org).

# Community Engagement Committee



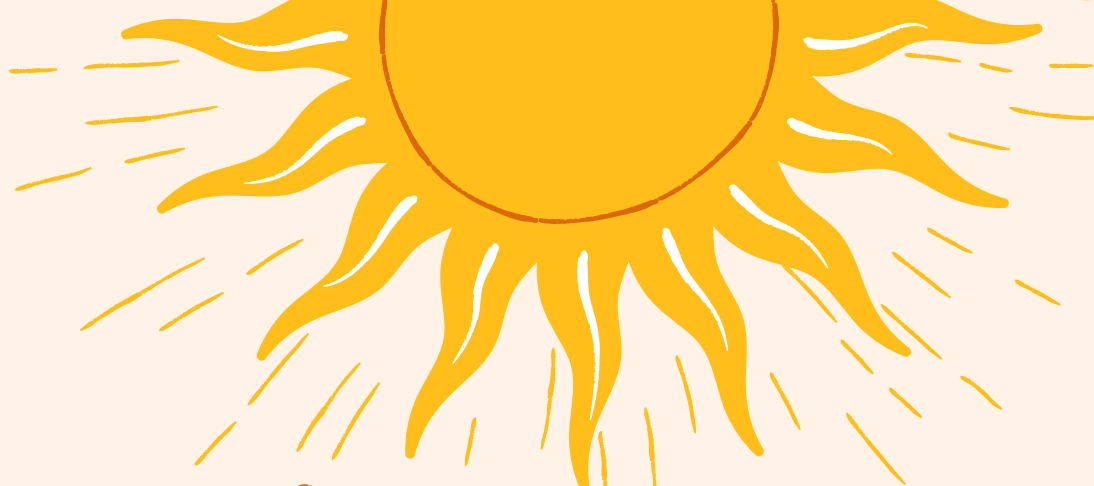
**Annette Lista,**  
**PharmD, BCCCP**

The mission of SCCM TX Chapter's Community Engagement Committee is to promote opportunities to engage members in public health learning activities and support local community agencies.

In 2023, we held our Annual **Water Safety and BLS Community Service Event** at Lodge 88 Swim Club in Houston. At this event, we taught children and caregivers about water safety and basic life support including choking and cardiac arrest. We held over 20+ demonstrations over the course of 2 days. Our 2024 event will be on July 27th and July 28th from 3PM-5PM each day. If you are interested in volunteering for this event you can contact Anne Rain at [artanner@mdanderson.org](mailto:artanner@mdanderson.org).

In 2023, the SCCM TX Chapter also held its annual **Fundamentals of Critical Care Support (FCCS) course**. The FCCS course provides healthcare professionals, including nonintensivists, with the training to manage critically ill patients for the first 24 hours or until appropriate critical care consultation can be arranged. The course concentrates on adults and critical care but also includes sections on critical care for pregnancy and pediatrics. Please stay tuned for the announcement for the dates of our 2024 SCCM TX Chapter FCCS course.





# Critical Care Corner

JUNE 2024

Society of Critical Care Medicine  
Texas Chapter

