The background of the entire page is a dark teal color. Scattered around the central text area are several stylized, flat-design slices of watermelon and oranges. The watermelon slices are pink with black seeds and a green rind. The orange slices are yellow-orange with white pith and a thick orange rind. They are positioned in the corners and along the sides of the central white rectangle.

SOCIETY OF CRITICAL
CARE MEDICINE
TEXAS CHAPTER

Critical Care Corner

JUNE 2022



SCCM

Society of Critical Care Medicine - Texas Chapter



CONTENTS:

1

President's Corner

Annette Lista, PharmD, BCCCP

2

Symposium

Kirstin Henley, MD, MSc

Diane Dreucean, PharmD

3

Communications

Matt McKenzie, PharmD, BCCCP

4

Research

Jennifer Gass, PharmD, MS, BCPS, BCCCP

5

Nominations

Kyllie Ryan-Hummel, PharmD, BCCCP

6

Programs

Jeannee Campbell, PA

7

Membership

Maggie Ma, PharmD, BCPS

Celia Morton, PharmD, BCCCP

8

Awards

Sheila R. Lightfoot, DNP (c), MSN Ed, RN

9

Community Engagement

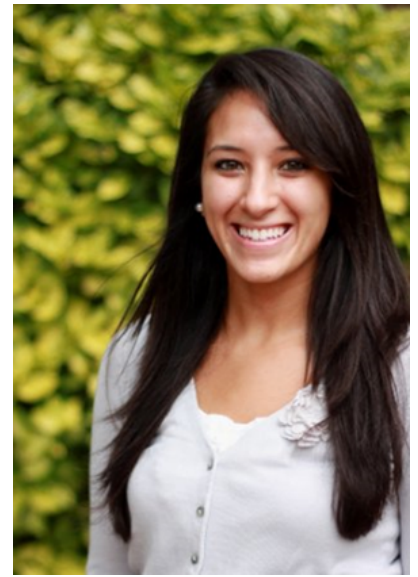
Darrell Alley, MD, MBA, FACS, FCCM

Editor: Melissa Sandler, PharmD, BCCCP

PRESIDENT'S CORNER

Greetings SCCM TX Chapter Members,

As we know, COVID-19 has intensified mental distress among healthcare workers. A number of surveys across different countries find prevalent mental health issues among healthcare workers during and after the pandemic. As COVID-19 hospitalizations are down across the state, I hope you are planning to focus on wellness and recovery this summer. We are excited to continue our monthly programming in each region. A special thank you to our Programs Committee, chaired by Jeannee Campbell, and our regional coordinators for ensuring high quality educational content across the state. **We are looking for 1-2 volunteers** in Odessa, Lubbock, Midland, Amarillo, Abilene or El Paso to serve as one of the West Texas regional coordinators.



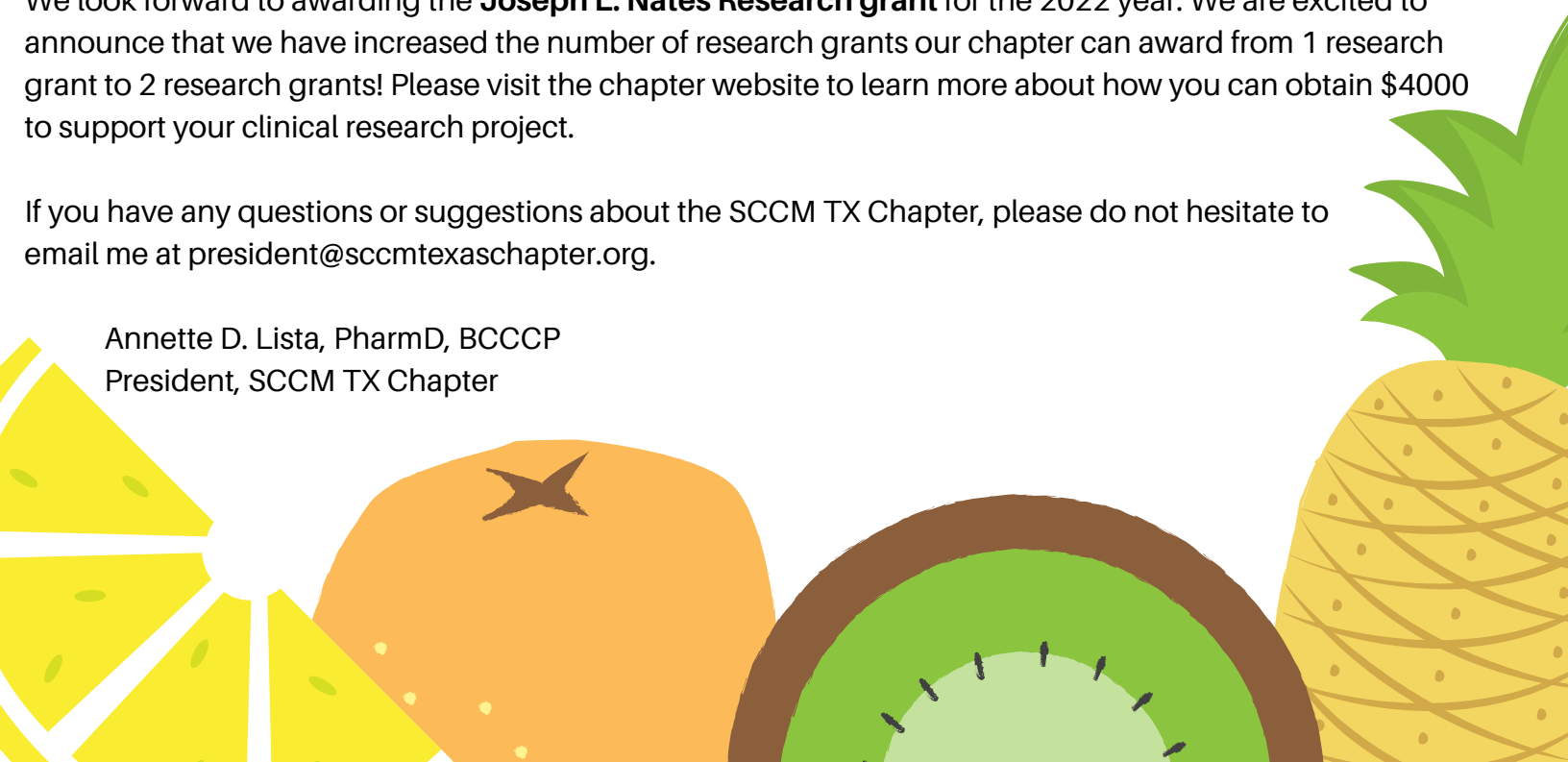
Our Symposium Committee has been busy planning the **11th Annual Texas SCCM Symposium "Embracing Diversity and Equity in Critical Care Medicine"** hosted at the Downtown Marriott in Austin, Texas on Friday, September 30th to Saturday, October 1st, 2022. We are excited to broaden our outreach by hosting our Symposium in Austin as well as welcoming SCCM President-Elect, Vinay M. Nadkarni, MD, FCCM, for the keynote address. Dr. Nadkarni is the Medical Director of the Center for Simulation, Advanced Education and Innovation at Children's Hospital of Philadelphia. The Community Engagement Committee is planning a Pre-Symposium event and details are forthcoming. Registration for the symposium will be open in the next few weeks. We look forward to meeting for some exciting and engaging programming.

The SCCM TX Chapter will also be offering the **Fundamental Critical Care Support (FCCS) Course** again to members in our state. We have tentatively planned to host this event Friday, July 29th to Saturday, July 30th 2022. Stay tuned for more details on this exciting opportunity.

We look forward to awarding the **Joseph L. Nates Research grant** for the 2022 year. We are excited to announce that we have increased the number of research grants our chapter can award from 1 research grant to 2 research grants! Please visit the chapter website to learn more about how you can obtain \$4000 to support your clinical research project.

If you have any questions or suggestions about the SCCM TX Chapter, please do not hesitate to email me at president@sccmtexaschapter.org.

Annette D. Lista, PharmD, BCCCP
President, SCCM TX Chapter





Kirstin Henley,
MD, MSc



Diane Dreucean,
PharmD, BCCCP

Please save the date for the **11th Annual Texas SCCM Symposium!**

The theme of this year's symposium is:

***Embracing diversity
and equity in critical
care medicine***

Austin Marriot Downtown

Friday-Saturday

September 30th - October, 1st 2022



The keynote address will be given by Dr. Vinay Nadkarni, Professor of Anesthesiology, Critical Care and Pediatrics at the University of Pennsylvania, Children's Hospital of Philadelphia (CHOP) and a world-renowned lecturer on resuscitation and simulation. He is also the Medical Director of the Center for Simulation, Advanced Education and Innovation at CHOP.

We are looking forward to a great in-person program this year with multiple Q&A panels, pro-con debates and our well attended Jeopardy session.

We will have a variety of session topics including:

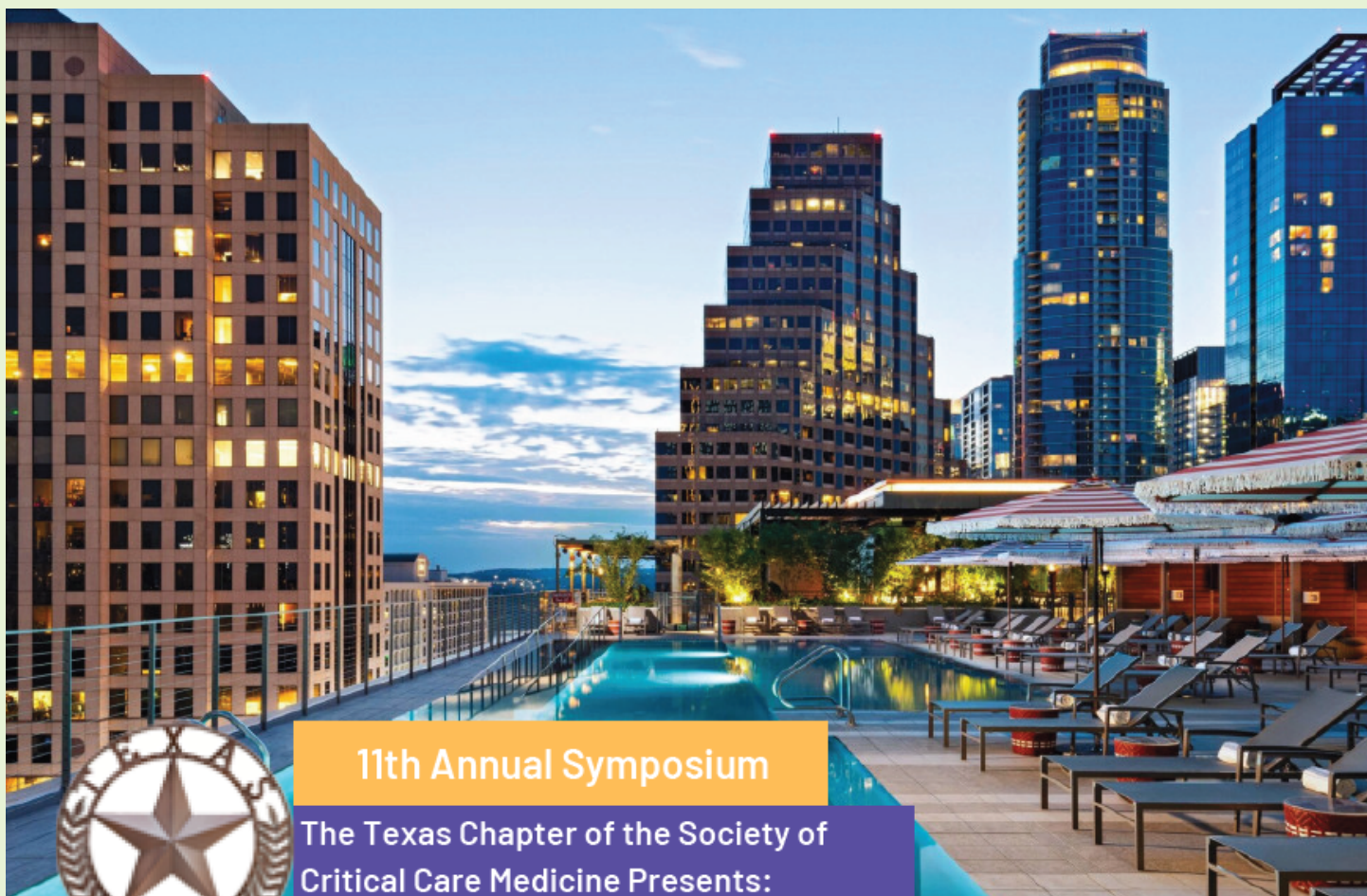
- Belonging, equity, diversity and inclusion
- Adult and pediatric updates on resuscitation and simulation
- Professional development and career advancement
- Latest heart failure guidelines and much, much more!!!

If you are interested in joining the symposium committee, please reach out to

Kirstin Henley (kirstin.henley@bcm.edu) or

Diane Dreucean (ddreucean@houstonmethodist.org) for more information.

We look forward to hearing from you!



11th Annual Symposium

The Texas Chapter of the Society of
Critical Care Medicine Presents:

*Embracing Diversity and Equity
in Critical Care Medicine*

Keynote Speaker

Vinay M. Nadkarni, MD, FCCM

SCCM President-Elect

Professor of Anesthesiology
& Critical Care, The University of
Pennsylvania & The Children's
Hospital of Pennsylvania



REGISTRATION

Early bird registration open!

- Deadline:
Friday, September 2nd
- Use the QR code to sign up!



Symposium Chair

Kirstin Henley, MD, MS, FAAP, FCCM
Assistant Professor and Pediatric Intensivist,
Children's Hospital of San Antonio, Baylor College of Medicine

Symposium Vice-Chair

Diane Dreucean, PharmD, BCCCP
Critical Care Pharmacist, Houston Methodist Hospital

Multidisciplinary CME credits will be awarded (MD, RN, PT/OT, PharmD)

Save the Date

Location: Austin Marriott Downtown

**Dates: Friday, September 30th &
Saturday, October 1st, 2022**

DAY 1 TOPICS

- Belonging, equity, diversity, inclusion
- Resuscitation and Simulation
- Education
- Heart failure

DAY 2 TOPICS

- Administration
- ARDS and Airway management
- Late Breaking topics

VENDORS

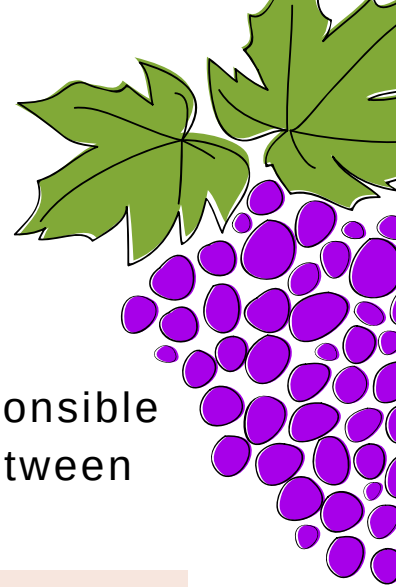
- Coming soon



Matt McKenzie,
PharmD, BCCCP

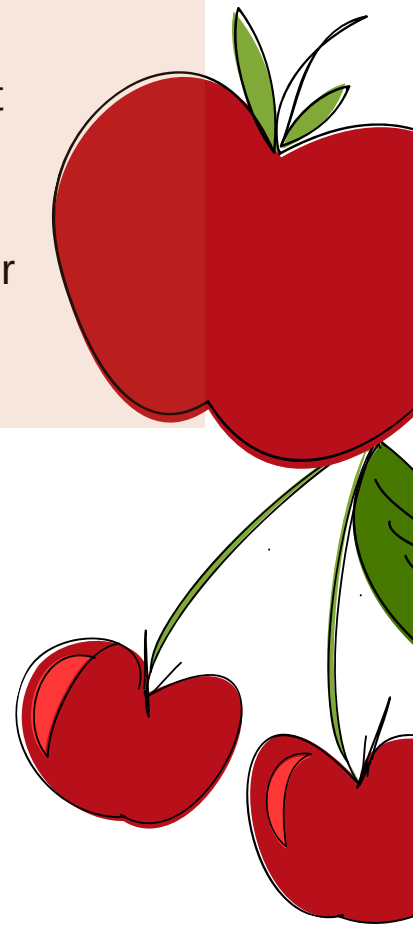
Communications Committee

The Communications Committee is responsible for the dissemination of information between our chapter and its members.

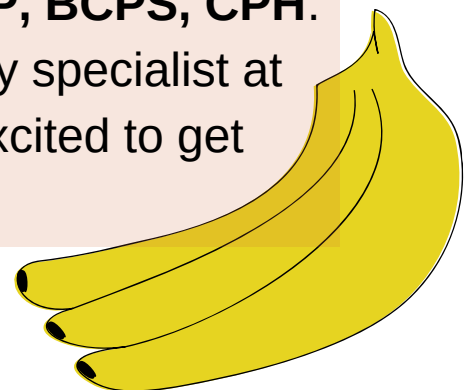
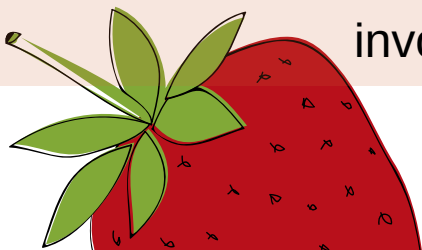


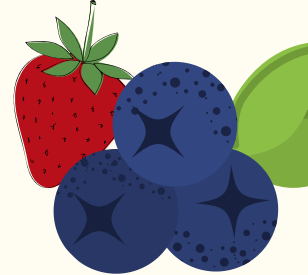
Please check our accounts out on **Instagram** (@sccmtxchapter), **Facebook** (SCCM Texas Chapter), and **Twitter** (@SCCMTXChapter)! Please follow to see our latest pictures of our events, membership, and any special announcements. We love to share what our members are doing across the state of Texas. So, **tag us** in or send us your pictures! You can tag us on Instagram by using the hashtag **#SCCMTexasChapter**

We are beginning to plan and disseminate information for both our Annual Symposium and Fundamentals of Critical Care Course (FCCS) so be on the look out for our emails, social media posts, and updates on the website. New this year will be our payment registration through Square. Utilize our QR code as seen in handouts for a direct link!



We would like to give a shout out and welcome to our new twitter coordinator: **Kevin Mercer, PharmD, MPH, BCCCP, BCPS, CPH**. Kevin is an emergency medicine clinical pharmacy specialist at Memorial Hermann Memorial City and is very excited to get involved with the Texas Chapter!





RESEARCH COMMITTEE

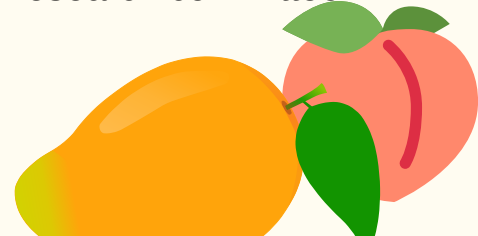
Jennifer Gass,
PharmD, MS, BCPS,
BCCCP

The Research Committee is happy to announce we are now accepting abstract submissions for research snapshots during the Annual Symposium. This is a great opportunity for our membership to showcase their work. Members can submit abstracts for research that is either completed and in-progress or as case reports. Top performing abstracts will be invited to showcase their work with a four minute snapshot platform presentation at the symposium. Further, the highest quality abstracts will be eligible to win the **Jeffrey J. Bruno Symposium Award**. This award allows for free symposium registration for the first and second place abstract. Additionally, the highest scoring abstract will receive \$600 toward SCCM or SCCM Texas Chapter activities over the next two years and the second highest scoring abstract will receive \$400 toward SCCM or SCCM Texas Chapter activities over the next two years. The deadline for abstract submission is **July 29th, 2022**. For more information please see the website at: <https://www.sccmtexaschapter.org/research-grant/>.



We would also like to highly encourage all members to start considering research they would like to perform and plan to submit for the chapter's **Joseph L. Nates Grant** of \$4000. This is an annual research grant intended to support clinical research designed to enhance the care and outcomes of critically ill patients. The application portal will be opening later this summer with a deadline later in the Fall. For more information, see the website at: <https://www.sccmtexaschapter.org/research-grant/>.

In an ongoing effort to increase the outreach of the research committee in the coming year we are looking for members who are interested in research to **join our team**. We are in particular need of nurses, nurse practitioners, respiratory therapists, dietitians, physical or occupational therapists, physicians assistants and other allied health professionals. Please review the information on the SCCM-Texas Chapter website Research tab or contact research@sccmtexaschapter.org for more information on joining the research committee.





Kyllie Ryan-Hummel,
PharmD, BCCCP

NOMINATIONS

Thank you everyone who participated in the 2021-2022 FCCM Mentorship Program and provided us with program feedback. We are excited to see how we can continue to improve the program through the coming year.

We are excited to grow our FCCM mentorship program and the first round of candidates are currently undergoing the pre-review process. This new program is to ensure potential applicants are competitive candidates and successful in their mentor-mentee relationships. If you are interested in applying for fellowship to the American College of Critical Care Medicine (ACCM) in 2023, formal enrollment for the mentorship program will begin in July with matches sent out by September.

Awards season is also here, please be on the lookout to nominate or apply for various SCCM awards.

Applications are **due August 2022.**

If you have any questions about the nominations process, FCCM Mentorship Program, or would like to get involved with the committee please email us at nominations@sccmtexaschapter.org.



PROGRAMS

SCCM TX Chapter programming continues to increase in all regions. To recruit members in other parts of the state, the “El Paso region” was renamed to the “West Texas region” to include El Paso, Midland, Odessa and Lubbock.

Jeanneé Campbell, PA-C

Here are the recent and upcoming events by region:

Houston:

May 11 th , 2022	Dalbavancin	Brennan's
May 25 th , 2022	Happy Hour with ImmunExpress	Boheme
June 29 th , 2022	Diagnosing PNH	Eddie V's
July 20 th , 2022	Giapreza	Mastro's

San Antonio:

May 4 th , 2022	Uplizna	Perry's
May 11 th , 2022	Avycaz	J-Prime
June 23 rd , 2022	Advances in Treatment of Intracranial Aneurysms and Strokes	Fleming's

DFW:

May 11 th , 2022	ICU Considerations for the ECMO patient	Winewood Grill
June 20 th , 2022	Advances in Acute Mechanical Support	Morton's Steakhouse

Austin:

June 28 th , 2022	Patient Identification and Treatment in Cardiogenic Shock	Perry's
------------------------------	---	---------

West Texas:

No events pending

We have a **volunteer opening** to assist with the West TX region programming to specifically cover Lubbock, Midland, and Odessa.

If you are interested, please reach out to the Programs Chair via email at programs@sccmtexaschapter.org



Maggie Ma,
PharmD, BCPS



Celia Morton,
PharmD, BCCCP

MEMBERSHIP

Our chapter membership is still strong and steady at over **620 members**. We recently held a **cookie giveaway** in which we gave away cookies to several Texas Chapter members and their respective units. There were 30 entries and the winners have been selected and notified. Congratulations to **Michelle Horng, Pankaj Kapadia, and Deepa Gotur**! Their photos will be featured on social media and below. See what these members had to say about their colleagues and unit:

Michelle Horng (The University of Texas MD Anderson ICU): "We have the best nurses and APPs!"

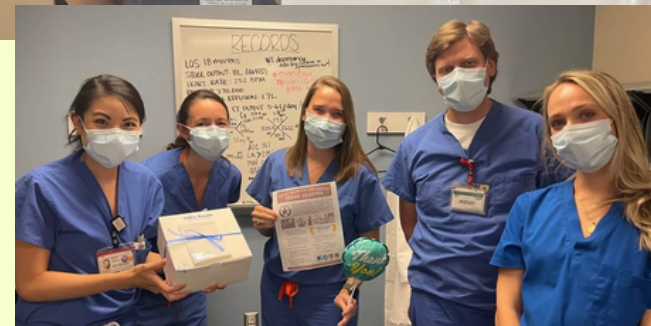
Pankaj Kapadia (Texas Vista Medical Center, 1st Floor MICU): "Excellent teamwork!"

Deepa Gotur (Houston Methodist Hospital): "Our team is very compassionate and care for the patients and family members. I had an instance of a tough patient who would not get intubated or any procedures performed until we promised his family was with him. Everyone went above and beyond to care for him and flex some rigid policies. The nurses at Walter 12 MICU are the best."

It's also the time of year where new trainees are coming on board! As a reminder, trainee members (critical care fellows, critical care residents) receive free membership to the Texas Chapter while they are a trainee.

If you are a sponsored fellow (through national SCCM), you are also eligible to add the Texas Chapter to your membership for free. To do this, you can log into your account and search for "Texas Chapter" in the store. Add to your cart and check out! Alternative, you can call customer service at (847)827-6888 any time from Monday through Friday, 9A-5P CST. If you are a program director, please reach out to membership@sccmtexaschapter.org to get your trainees set up with free Texas Chapter membership for the year!

If you have any questions regarding membership, your renewal date, or if you're not receiving emails from us (and would like to), contact us at membership@sccmtexaschapter.org.





Awards Committee

Thank you to those who submitted nominations for the annual awards. We acknowledged our members at the end of the year meeting in March.

We also would like to acknowledge all of our Professional Development award winners! We are glad to say that we were able to support them in attending Critical Care Congress this past year!

We hope you had an excellent experience at Congress.

Sheila R. Lightfoot,
DNP (c), MSN Ed, RN

<u>OUTSTANDING MEMBER AWARD</u> Houston Jeanneé Campbell, PA-C Dallas Meghan Johns, PharmD, MBA San Antonio Kirstin Henley, MD, MSc El Paso Jennifer Hartman, PharmD, BCPS, BCCCP Austin Laura Guerrero, DNP, RN, AGACNP-BC	<u>EXCELLENCE IN SERVICE AWARD</u> Education Deepa Gotur, MD, FCCP, FCCM Clinical Practice Nisha Rathi, MD Research/QI Anne Rain Brown, PharmD, BCCCP, FCCM
<u>CASEY M DRAWERT, MD EXCELLENCE IN LEADERSHIP AWARD</u> Maggie Ma, PharmD, BCPS Leadership as the Membership Committee Chair	<u>PROFESSIONAL DEVELOPMENT AWARD</u> Michael Sirimatuross, PharmD, FCCM Jana Sigmon, PharmD Anne Rain Brown, PharmD, FCCM Chris Perme, PT

The **Professional Development Award** is provided to members each year who seek to attend Congress to gain professional growth. The award provides up to \$1000 for registration and travel reimbursement. Applications will be open again in **September 2022**.

Be on the lookout for information this summer.

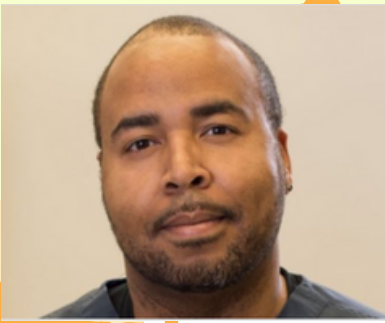
Please think about your colleagues that may qualify for a national award.

National SCCM has several new additions including Patient Safety and Ethics, Patient and Family, Teaching and Education, and Administrative awards. Be on the lookout for the Distinguished Service Award, Lifetime Achievement Award, and the ACCM Distinguished Investigator Award.

If you are interested in volunteering as a committee member for the upcoming year, please reach out at awards@sccmtexaschapter.org.

We would like to see members from across the state as well as across disciplines.





Darrell Alley,
MD, MBA, FACS, FCCM

Community Engagement

Howdy Texas Chapter,

I hope this newsletter find you all safe and cool as we head into another Texas summer.

Next month, we will be presenting a **water safety / CPR education for the public.**

Also, there is a scheduled **FCCS course.**

Please check the website and your email for future announcements.

Plans are also underway for **end-of-life discussions at a place of worship** later this year. If this endeavor proves successful, we may take it on the road to other houses of praise.

As always, if any members are interested in planning or participating in activities, please contact me at

communityengagement@gmail.com



Society of Critical Care Medicine Texas Chapter Virtual Fundamentals of Critical Care Support Course

July 29-30, 2022

Day 1: 7:30am-3:00pm

Day 2: 7:30am-3:00pm

Cost: \$90 (includes access to FCCS e-Book)

A two-day comprehensive course addressing fundamental management principles for the first 24 hours of critical care. Hosted virtually via Zoom. Course faculty will present traditional didactic sessions followed by virtual breakout sessions using virtual simulations and case discussions.

Target Audience: Fundamental Critical Care Support (FCCS) is designed to prepare health care providers caring for unstable, critically ill or injured patients. Likely participants include: Hospitalists, MDs, APRNs, PAs, RNs, PharmDs, RRTs, Fellows, Students, Rapid Response/Medical Emergency Team members, and Pre-hospital providers with lengthy patient transfer times.

Educational Objectives: At the conclusion of the program, the participant should be able to:

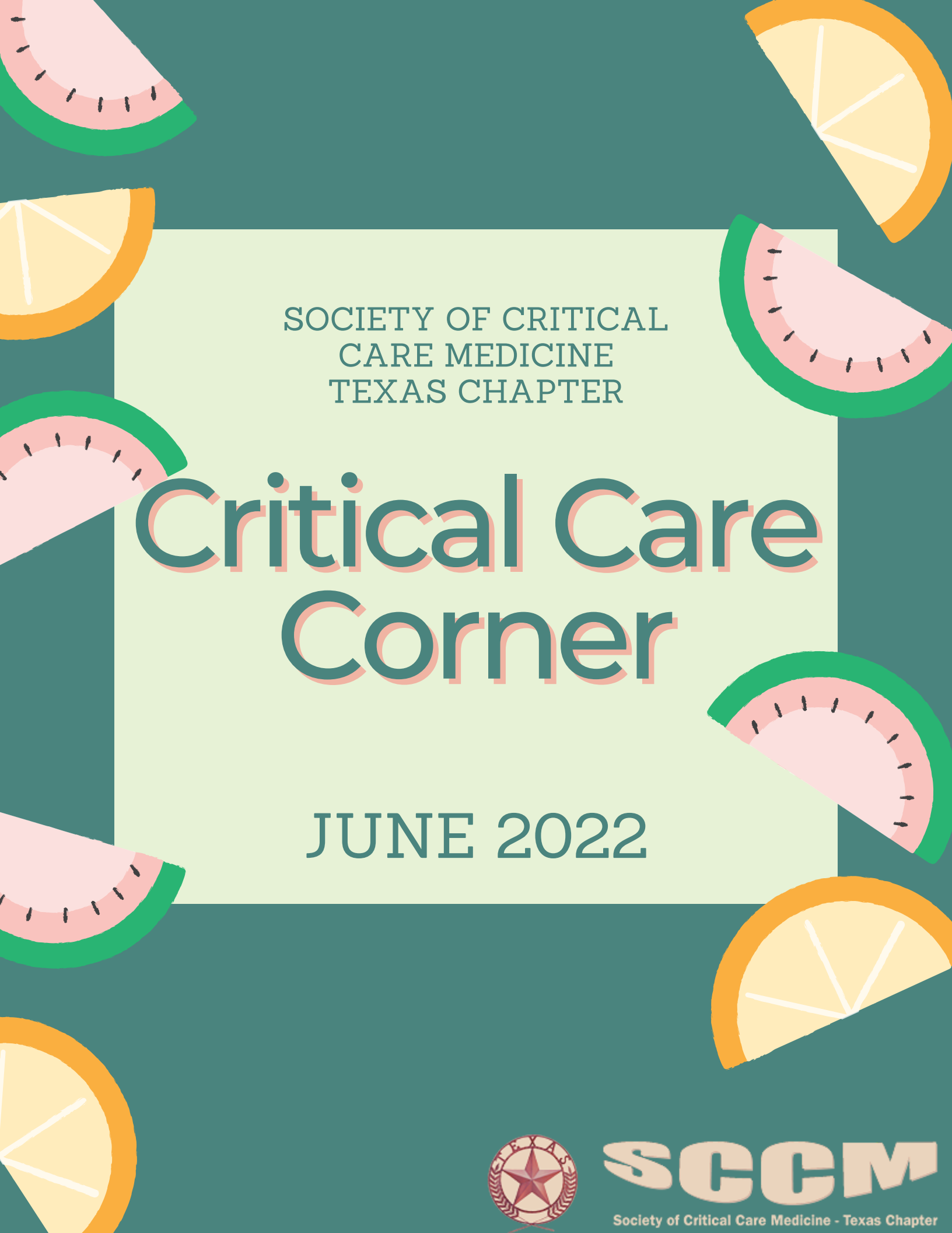
- Prioritize assessment needs for the critically ill or injured.
- Select appropriate diagnostic tests.
- Identify and respond to significant changes in the unstable patient.
- Recognize and initiate management of acute life-threatening conditions.
- Determine the need for expert consultation and/or patient transfer and prepare the practitioner for optimally accomplishing transfer.



Deadline: Registration will open **June 15, 2022** and close when space is full or on July 20, 2022 at 5:00pm (CST)

Confirmation: All who are accepted for registration will receive email confirmation and directions.

Zoom Etiquette: Proper meeting attire. To earn full credit for the course, participants must enable their video feed and are asked to mute their audio. Participants may unmute to ask questions and participate in class discussions.

The background of the entire page is a dark teal color. Scattered around the central text area are several stylized, flat-design slices of watermelon and oranges. The watermelon slices are pink with black seeds and a green rind. The orange slices are yellow-orange with white pith and a darker orange rind. They are positioned in the corners and along the sides of the central white rectangle.

SOCIETY OF CRITICAL
CARE MEDICINE
TEXAS CHAPTER

Critical Care Corner

JUNE 2022



SCCM

Society of Critical Care Medicine - Texas Chapter