

Society of Critical Care Medicine
Texas Chapter

CRITICAL CARE CORNER

SEPTEMBER 2018 • VOLUME 8 • ISSUE 3



SCCM

Society of Critical Care Medicine - Texas Chapter

CONTENTS

1

PRESIDENT'S CORNER

Mary Lou Warren, DNP, RN, CNS-CC, FCCM

2

SYMPOSIUM COMMITTEE

Reagan Collins, PharmD, BCCCP

3

COMMUNICATION COMMITTEE

Annette Lista, PharmD, BCCCP

5

RESEARCH COMMITTEE

Teresa Allison, PharmD, BCPS, BCCCP

NOMINATIONS COMMITTEE

Rebecca Attridge, PharmD, MSc, BCPS

6

PROGRAM COMMITTEE

Andro Herrera-Mendoza, DBA, RRT-NPS, RPFT, FACHE

7

MEMBERSHIP COMMITTEE

Maggie Ma, PharmD, BCPS

8

AWARDS COMMITTEE

Lisa Beil, MSN, RN, APRN, AGACNP-BC, ACNS-BC



SCCM Texas
Chapter



@SCCMTXChapter



SCCM Texas Chapter
2429 Bissonnet Suite 461
Houston, TX 77005



Editor: Emily Sartain, PharmD Candidate 2019



President's Corner

We have had a busy summer with active engagement from all of the chapter committees. I would like to highlight some of the work that is being done and what is upcoming in the next several months.

Symposium

The Symposium Planning Committee under the leadership of Reagan Collins has put together an amazing slate of local and nationally known speakers to address our theme of "Less is More in Critical Care". The symposium is set to take place in Dallas October 19 and 20, 2018. We hope that attendees will take advantage of the adult and pediatric FCCS courses being offered as pre-conferences. The instructors are from San Antonio, Houston, and the Dallas areas. Check out our chapter website for more information. Early bird registration rates goes through October 1.

Programming

Andro Herrera-Mendoza has been working with the San Antonio, Dallas, El Paso, and Houston area coordinators to provide quality programs including two simulcast presentations in three of the four regions. These simulcasts have been extremely well received, and it's been fun for members to engage with each other across the state. Our next simulcast is currently being planned for November, and we hope to include members from the Austin area. More info to come! Additionally, an outreach program was offered in the Corpus Christi area which was well attended. A second program is set for September 20. Many thanks to the Program and Communications committees members who have worked hard to plan and carry out each of the programs.

Research

The Research Committee led by Teresa Allison area has recently developed a draft of our research grant application. The Chapter is excited to be able to support members with carrying out research activities to improve care for the critically ill. Also, information on how to apply for the Alan I Fields Award was recently distributed. As a chapter member, you are eligible to submit your accepted SCCM Congress abstract for a travel award. Two awards to support travel and lodging for Congress in San Diego in 2019 will be provided for completed research based on years of research experience. Please see our website if you are interested in applying.

Membership

Maggie Ma, Membership Committee Chair, and Annette Lista, Communications Committee Chair, are currently evaluating programs to better communicate with you all as members. We have had some glitches with our current system, and we are committed to improve and ensure members are receiving the information they need.

Awards and Nominations

Both committees led by Lisa Beil and Becca Attridge, respectively, are actively reviewing the awards and nomination processes and timelines. Applications for both will be forthcoming this fall. Please take the time to review the available awards and leadership openings and consider yourself and/or your peers. Visit our website or reach out to the committee chairs individually if you have additional questions.

I am looking forward to our upcoming events and am hopeful that you will take advantage of these many opportunities and benefits as chapter members. See you in Dallas!

Mary Lou Warren, DNP, RN, CNS-CC, FCCM
President, Texas SCCM Chapter





SYMPOSIUM COMMITTEE UPDATE

Reagan Collins, PharmD, BCCCP

Registration for the 7th Annual Symposium is OPEN!

Register online today at early bird rates through **September 30, 2018** at http://sccmtexaschapter.formstack.com/forms/sccm_2018_symposium_registration. See hotel recommendations for booking as well at <http://www.sccmtexaschapter.org/registration-hotel/>

Theme: Less is More in Critical Care

Dates: Friday & Saturday, 10/19/18 – 10/20/18

Location: Texas Health Presbyterian Hospital in Dallas, TX

- Multidisciplinary program content and speaker panel with clinicians from all across Texas
- Research snapshot presentations
- Exhibit hall with critical care vendors
- Networking with critical care practitioners from all over Texas
- Pre-conference Pediatric FCCS course offered on 10/17/18 – 10/18/18
- Pre-conference Adult FCCS Skills lab offered on 10/18/18
- Continuing education is being secured for the following disciplines: **Physician, Nursing, Pharmacy, Respiratory Therapy, Dietitian, and Physical/Occupational Therapy**

Please visit the SCCM Texas Chapter website for more details on the 7th annual symposium, available at: <http://www.sccmtexaschapter.org/annual-symposium/>

If you are interested in joining the symposium planning committee or have any questions, please contact the Symposium Committee Chair, Reagan Collins (symposium@sccmtexaschapter.org).

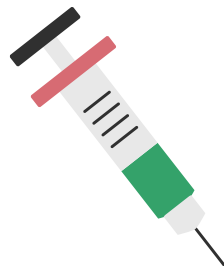
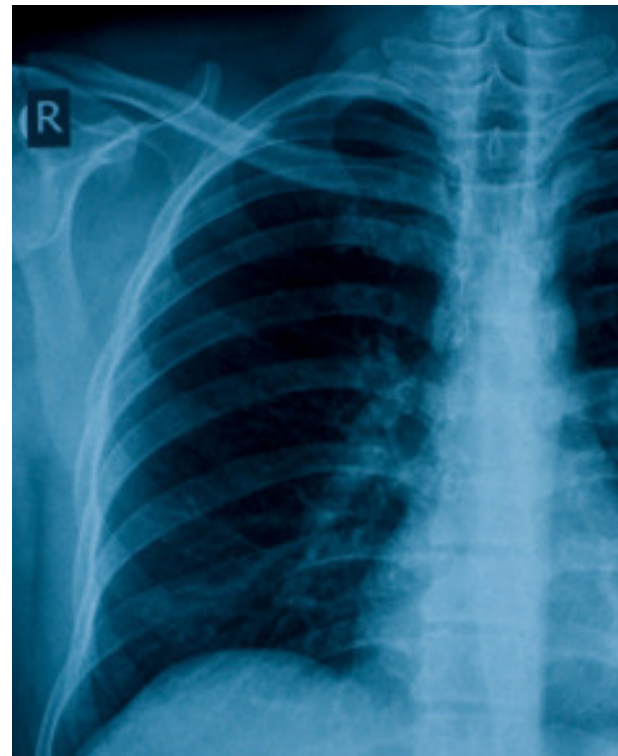
COMMUNICATION COMMITTEE UPDATE

Annette Lista, PharmD, BCCCP

The Communication Committee is responsible for the dissemination of information between our chapter and its members and this is primarily done electronically via our chapter website (www.sccmtexaschapter.org), email (communications@sccmtexaschapter.org), and social media with our Facebook and Twitter accounts (@SCCMTXChapter).

There are several new changes to our team here on the Communications Committee. First, I am taking over for Lan Bui, PharmD, BCPS as the Chair of the Communications Committee. Lan made an outstanding contribution to the chapter as the Chair of the Communications Committee for the last year and it is with much excitement from me to continue her excellent work. As I am transitioning to the new position, Emily Sartain, PharmD Candidate 2019 will replace my previous position as the Newsletter Coordinator (Welcome!). In addition, I would like to introduce two of our newest Communications Committee members: Ashley Selby, PharmD (Program Coordinator - Dallas area) and Jennifer Mireles, RD, MS (Program Coordinator— San Antonio). Last but not least, I would like to acknowledge our wonderful and hardworking committee members that help keep SCCM Texas Chapter communications running smoothly: Elizabeth Dozier, BSN, RN (Program Coordinator—Houston), Anantha Vellipuram, MD (Program Coordinator - El Paso), Amaris Fuentes, PharmD, BCPS, BCCCP (Website Coordinator), and Mahmoud Sabawi, PharmD (Social Media Coordinator— Facebook/Twitter).

Look for our emails (texaschapter.sccm@gmail.com), website (www.sccmtexaschapter.org), Facebook or Twitter (@SCCMTXChapter) for meeting announcements or general organizational communications. Don't forget to follow us on Facebook and Twitter!

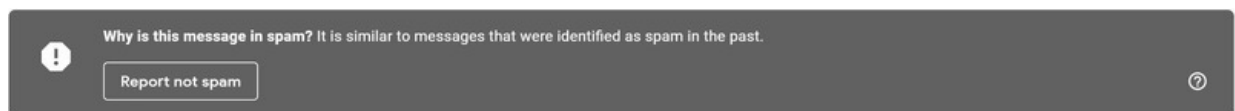


YOU'VE GOT MAIL!



Our chapter will be transitioning to a new email service provider to send out our email announcements starting on **October 1st , 2018**. Although this should help resolve some issues we've had recently with our email communications, our emails may end up in your Spam or Junk mail from our new server. To reduce the likelihood of this happening, we have several suggestions:

- **Periodically check your Spam or Junk folder starting in October.** If our emails are being sent there, report that it is not spam if possible (many email service providers have a button you can click on to redirect messages sent to spam so that it goes to your inbox in the future). See example from Gmail:



- Add us to your Contacts list (**texaschapter.sccm@gmail.com**).
- If you still notice problems despite following the first two steps (after October 1st), **consider changing your email on file to your personal email instead of your work email** (many large healthcare institutions have very secure systems in place that will filter out non-urgent emails from outside the institution). You can send a request to the Membership Chair.
- We recommend that you proactively **check our [website](#), [Facebook](#), or [Twitter](#) for meeting invites and other announcements during this time of transition.**

In addition, if your membership has lapsed by 3 months or more, you will no longer receive emails from us. Click [here](#) to renew your local Texas SCCM membership only, [or here](#) to renew your national and Texas chapter memberships.

Lastly, we will be conducting a survey at the end of our 3-month pilot to see if using the new email service provider is beneficial to our members. If there are any issues, concerns, or questions – please direct them to the membership chair at membership@sccmtexaschapter.org.

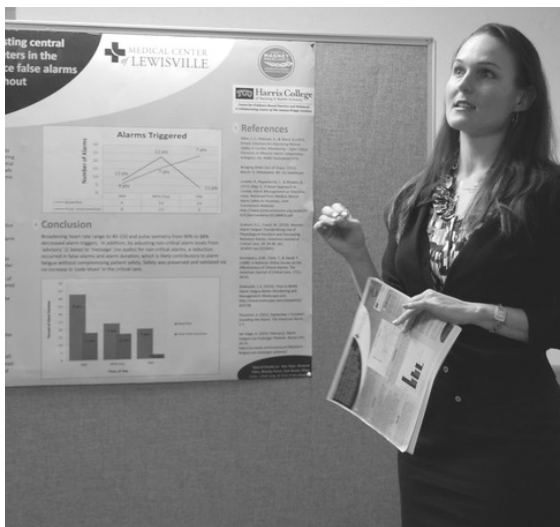
Research Committee Update

Teresa A. Allison, PharmD,
BCPS, BCCCP

Thank you to everyone who submitted an abstract for this year's symposium at the Texas Presbyterian Hospital in Dallas Texas, October 19 - 20, 2018.

If accepted your abstract will be presented as a 4-minute PowerPoint research snapshot platform presentation. Additionally, it will be considered for one of two awards for Best Symposium Abstract. Recipients will receive up to \$500 to be utilized for attending the symposium as well as free registration. Note, you can present it at the chapter symposium as well as the Annual SCCM Congress.

Help is needed coordinating the abstract review! If you are interested in joining the Research Committee please contact us at research@sccmtexaschapter.org.



ALAN I. FIELDS AWARD

On November 18, 2009, the Society of Critical Care Medicine (SCCM) Texas Chapter honored Alan I. Fields MD, FAAP, FCCM, with the Lifetime Achievement Award for his invaluable contributions to critical care medicine and to the Society.

In recognition of his many accomplishments and contributions, the SCCM Texas Chapter has founded two annual awards in his name.

There will be one award for a critical care trainee or practitioner **with less than 2 years of experience**, and one to a practitioner with **2 or more years of experience**. Recipients will receive up to \$1250 to be utilized for attending the SCCM Annual

Congress. Recipients are expected to present their work as a research snapshot presentation at the SCCM Annual Congress. Additionally, recipients are expected to present their work at the end of the year SCCM Texas Chapter meeting in March. Please be on the lookout for emails and on our webpage for submission information!

Nominations Committee Update

Rebecca L. Attridge, PharmD, MSc, BCPS

The Nominations Committee is working to develop a program to assist members who are interested in submitting an application to become a Fellow of the American Academy of Critical Care Medicine (FCCM). The goal is to develop a program to connect candidates to current members who are fellows so that they can assist candidates with the lengthy application process. The Nominations Committee is seeking both current members who are already fellows of SCCM as well as new committee members to help with this program and other initiatives.

Please email nominations@sccmtexaschapter.org if you would like to help! In addition, members who are interested in applying to become FCCM can email for more information and to be connected to a current member who is already an FCCM.



(LEFT) Corpus Christi educational meeting on acute stroke intervention and advances in cerebral aneurysm treatment
(RIGHT) Houston educational meeting on the use of high flow nasal cannula

PROGRAM COMMITTEE UPDATE

ANDRO HERRERA-MENDOZA, DBA, RRT-NPS, RPFT, FACHE

Summer has been a productive time for the Programing Committee with a broad base of critical care topics presented in our member regions. If you have not had an opportunity to actively participate in a local program, I encourage all members to utilize their member-benefit by attending and gaining insight into new modalities and treatments being practiced in critical care medicine today. As Fall approaches, look for expanded access to critical care programming utilizing web-based technology and additional regional programming. One example of improved access is evidenced by our upcoming Corpus Christ Regional program, New Treatment Option for Distributive Shock Understanding the role of Giapreza™ (angiotensin II). Additionally, we are actively planning another Multi-City initiative that will include Austin, Dallas, Houston, and San Antonio with a planned launch of November. Also, our first regional program in Austin occurred on July 23rd and was an initial foray into continued programming that will be planned for our Capital City.

The Program Committee welcomes members interested in planning future chapter meetings and events! We also welcome ideas or suggestions you may have for programming across the state. If you are interested in becoming actively involved in the Program Committee, please contact Andro Herrera-Mendoza, at programs@scmtexaschapter.org.

Region	Month	Programming
Dallas	July	Improving your In-hospital Cardiac Arrest Outcomes
	August	Acute Blood Pressure Control Understanding the role of Cleviprex® (clevidipine)
El Paso	July	Prognostication, uncertainty and decision making at the end of life
	August	Technology in Volume Resuscitation
Houston	July	Improving your In-hospital Cardiac Arrest Outcomes
	August	Nasal High Flow - Clinical Evidence for Optimizing Nasal High Flow Impact and Burden of Comorbidities in Patients with VTE or NVAF
San Antonio	July	The Science Behind CPR
	August	Reviewing the Innovative, 4-Oil Lipid Emulsion Through Patient Cases



Membership Committee Update

MAGGIE MA, PHARMD, BCPS

Our chapter is currently at our record high of over 600 members! Thank you for your continued support and involvement. In conjunction with our upcoming Annual Symposium, we wanted to announce our **FLASH MEMBERSHIP DRIVE**. From August 20th until October 12th, members who refer any **5 new individuals** will receive a free 2-day registration to our 7th Annual Symposium. In addition, you will also receive a free 1-year membership to the Texas SCCM chapter. Keep in mind, these individuals must not be trainees nor previous Texas SCCM members. Please have the new members denote the referral on the application, or notify the membership chair of your referral.

Secondly, national SCCM has recently restructured their membership system which now offers different membership levels: associate, professional, and select membership. The associate membership starts at \$60-90 and comes with the basic membership benefits, whereas the select membership has added benefits including access to all SCCM On-Demand products and select ePublications (and much more) for \$226-490 per year (depending on your profession). For more information on the different types of memberships for national SCCM, you can visit www.sccm.org/About-SCCM/Join-SCCM. Keep in mind, this is only for national SCCM – our Texas chapter structure and pricing remain unchanged.

We have also been having some issues with our email system, so **if you have not been receiving emails from us**, please email the membership chair at membershipsccmtexaschapter.org to resolve the issue. We are working on resolving the problems and thank you for your patience and understanding with this! Lastly, we are currently looking for a committee member representative for each region (Houston, Dallas, San Antonio, El Paso, and one for all other areas) to assist with various membership committee duties. This includes tasks such as attending meetings to promote membership sign-up from non-members, reviewing meeting attendance sheets, and more. Please email the membership chair for more information if you are interested!

AWARDS COMMITTEE UPDATE

LISA BEIL, MSN, APRN, AGACNP-BC, ACNS-BC

The SCCM Texas Chapter Annual Awards are just around the corner! **Nominations for the Annual Awards will open October 1, 2018 and must be received by December 1, 2018.**

If you haven't already, start thinking of who you would like to nominate for one of the following award categories:

Outstanding Member Award:

This recognition will be awarded to one member from each of the Houston, San Antonio, Dallas, El Paso and "Other Texas" areas for their contributions to the chapter. *Individuals on the Board of Directors or Executive Committee as well as Committee Chairs and Co-chairs are not eligible.*

Excellence in Service Award (3 categories):

This recognition will be awarded to chapter members for their contributions to critically ill and injured patients. One award will be distributed in each of the following three areas listed.

Nominations for the Excellence in Service Award must provide specific details/examples supporting the nominee's recent involvement related to the award category selected. An individual can only be nominated for 1 category.

This is a wonderful opportunity to recognize our colleagues and ourselves for the dedicated efforts and accomplishments put forth toward improving patient care and making this a successful Chapter! Stay tuned for the online nominations link opening October 1st at www.sccmtexaschapter.org. We hope to see you in Dallas in October!

OUTSTANDING MEMBER AWARD

- Active participation in chapter activities
- Active attendance at chapter meetings
- Active attempts of recruiting new members

EXCELLENCE IN SERVICE AWARD

- Education
- Clinical Practice
- Research/Quality Improvement Activities

SCCM TEXAS CHAPTER

The SCCM Texas Chapter is a multidisciplinary organization composed of critical care practitioners, whose purpose is to **foster collaboration** among caregivers at a state level for the enhancement of patient care. Members of the chapter include physicians, nurses, pharmacists, respiratory therapists, physician assistants and other health care professionals.

The Texas Chapter's mission is to provide its members with educational opportunities, professional resources and a chance for networking with other critical care professionals from across the region in order to improve the quality of critical care. For additional information, you can visit the SCCM national website at: www.sccm.org.